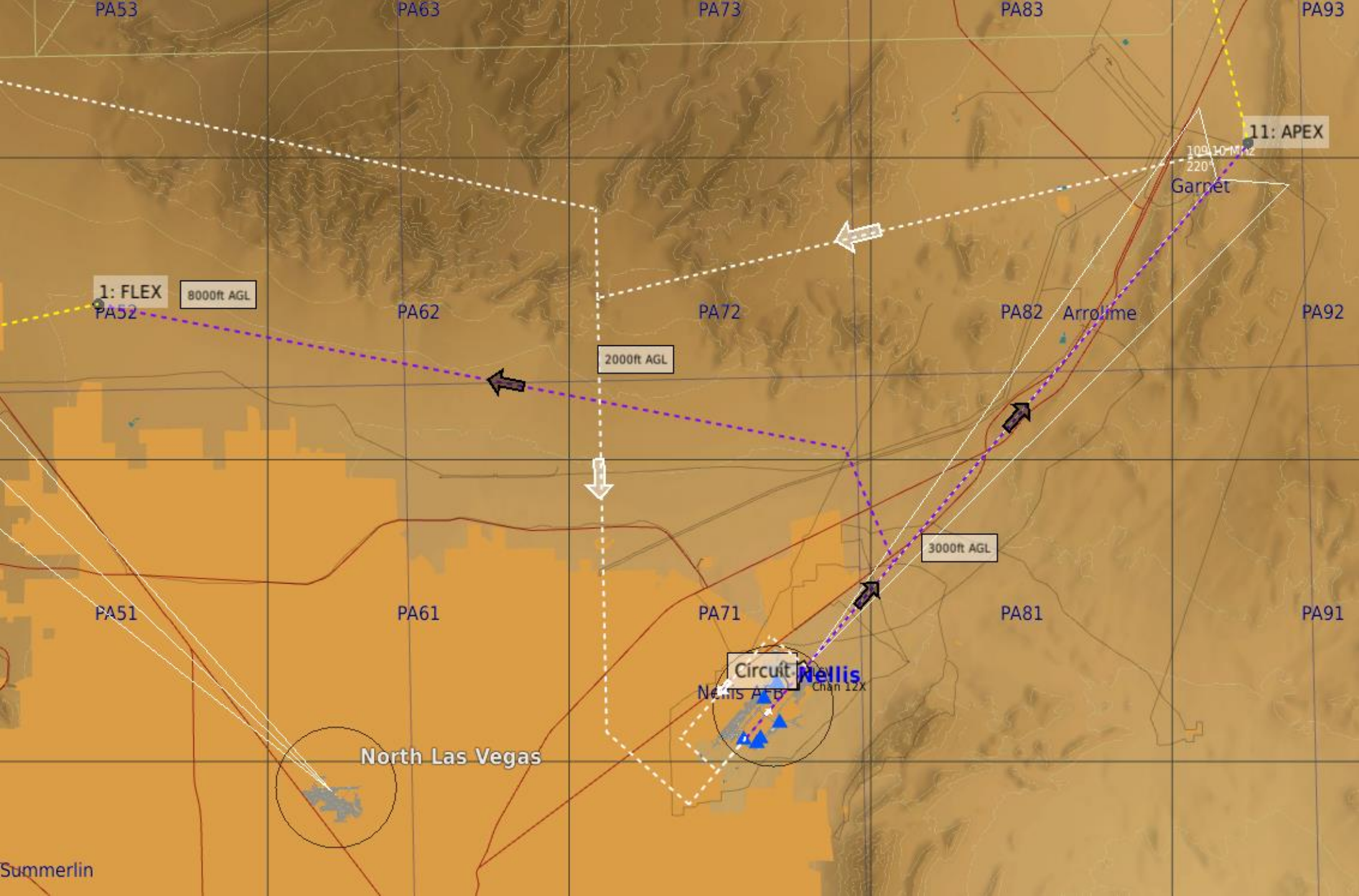


[illegible]

Tonopah set to neutral to allow neutral AI aircraft to operate. Red rearm and refuel is set via ground units near to parking spots.





Nellis AFB recommended traffic patterns.

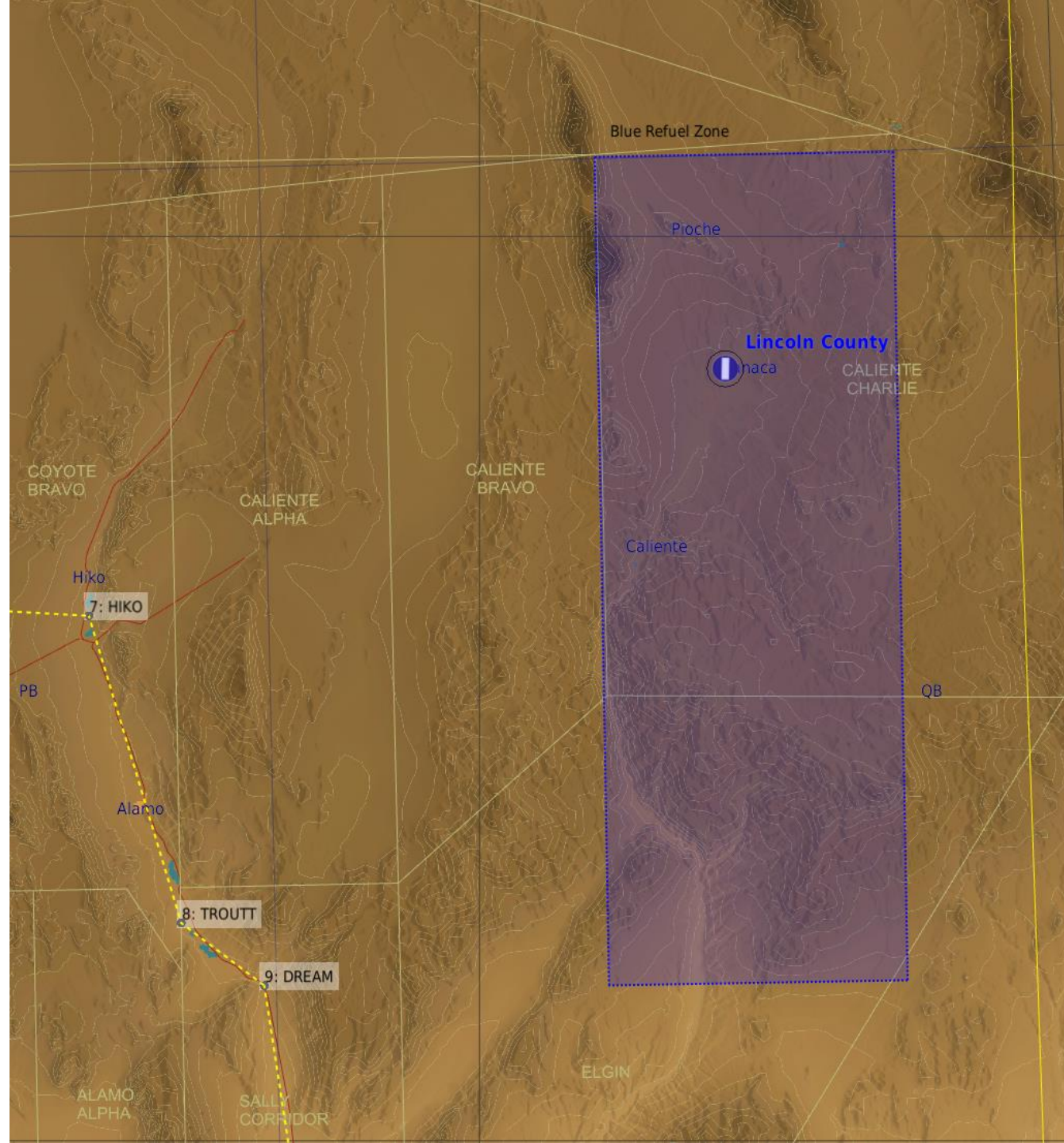
Wind will usually require this directions

White is inbound

Purple is outbound

Yellow is between waypoints





Three tankers are available that are set to North - South orbits within the blue box. They may stray outside this box

F16 Boom Tanker - Shell 1-1 (Fast)

KC135; 52X; 252Mhz

24000ft @ 0.72 Mach

A10 Boom Tanker - Arco 1-1 (Slow)

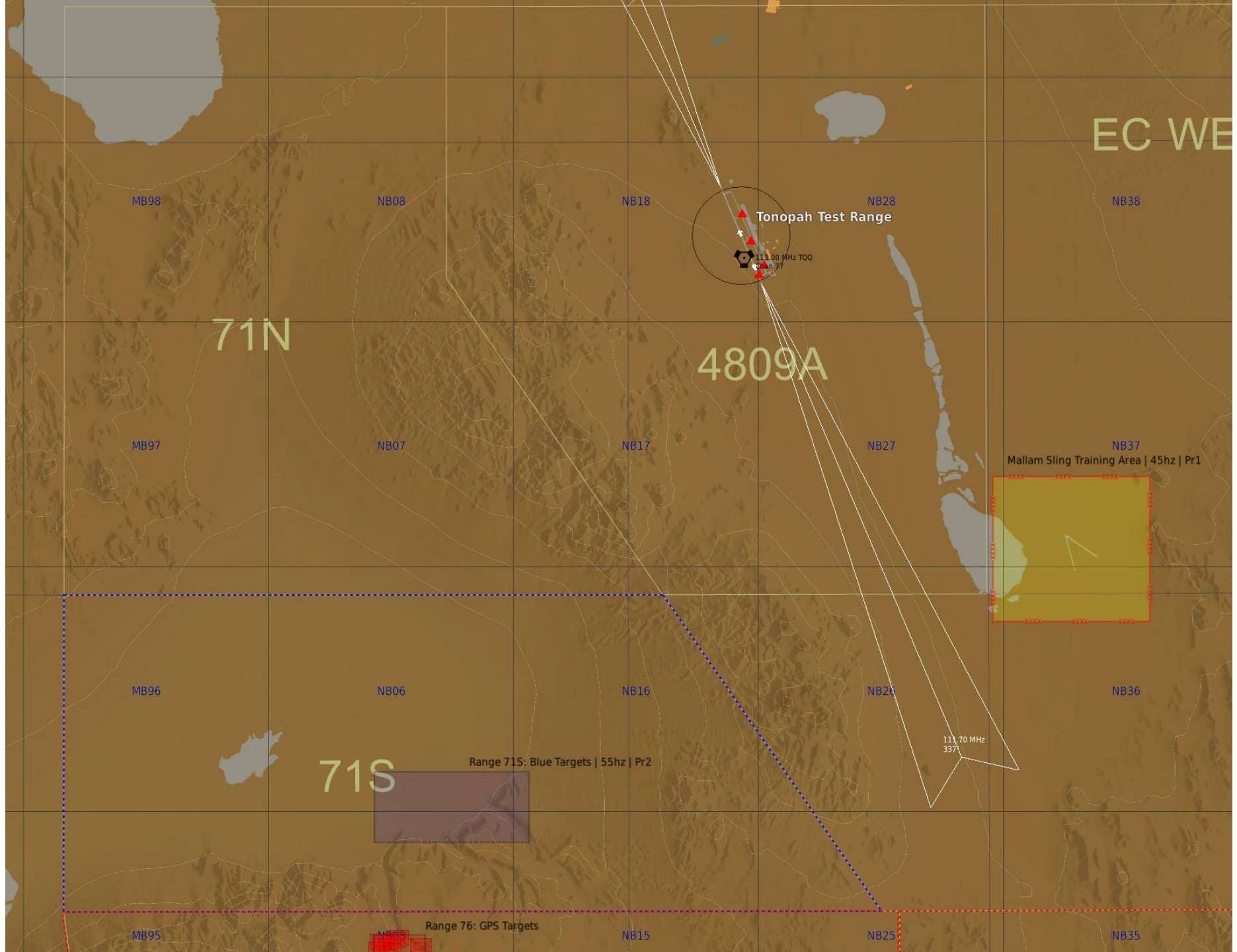
KC135 A10C: 53X; 253Mhz

18000ft @ 0.53 Mach

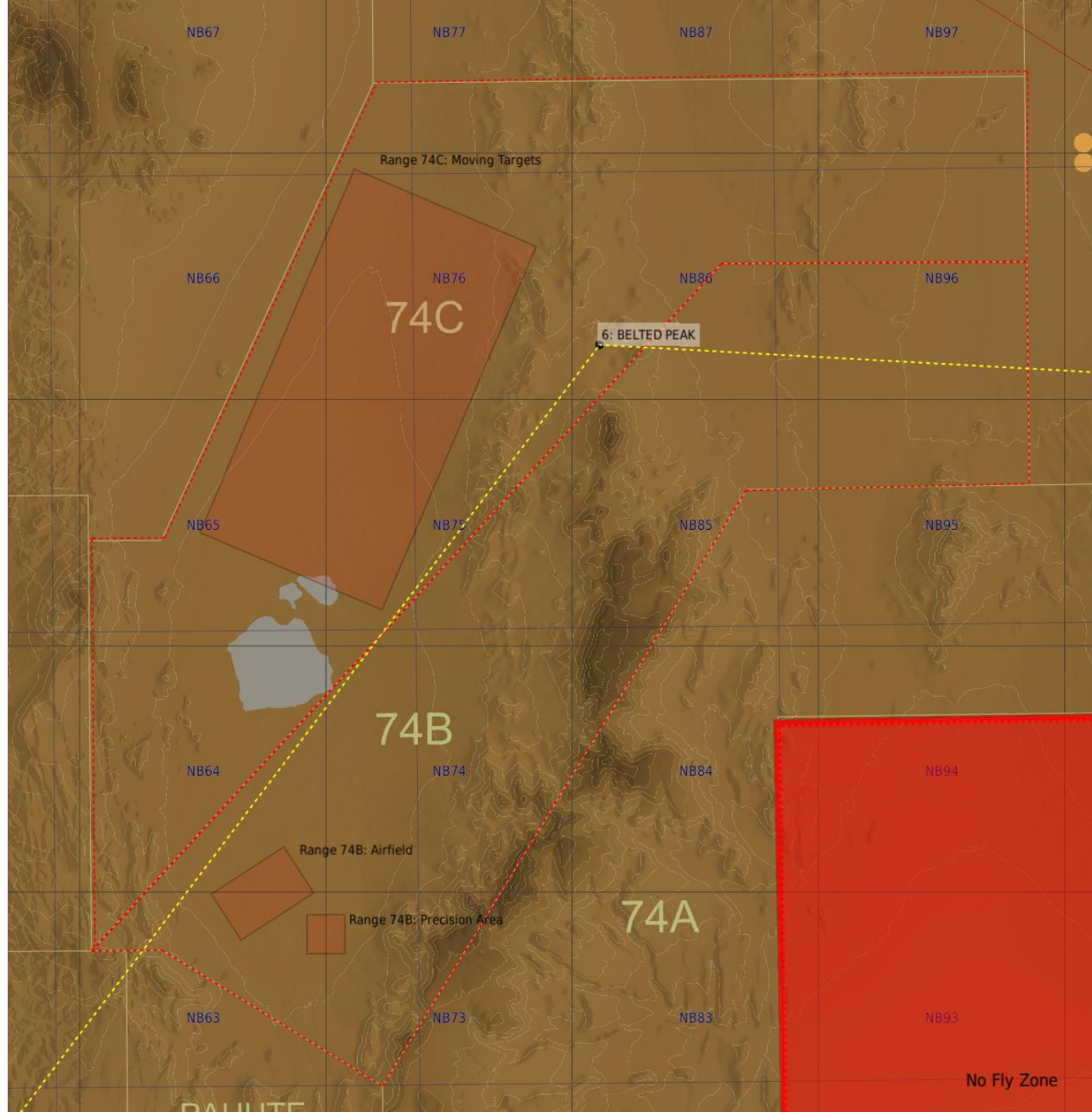
Droge Tanker - Texaco 1-1

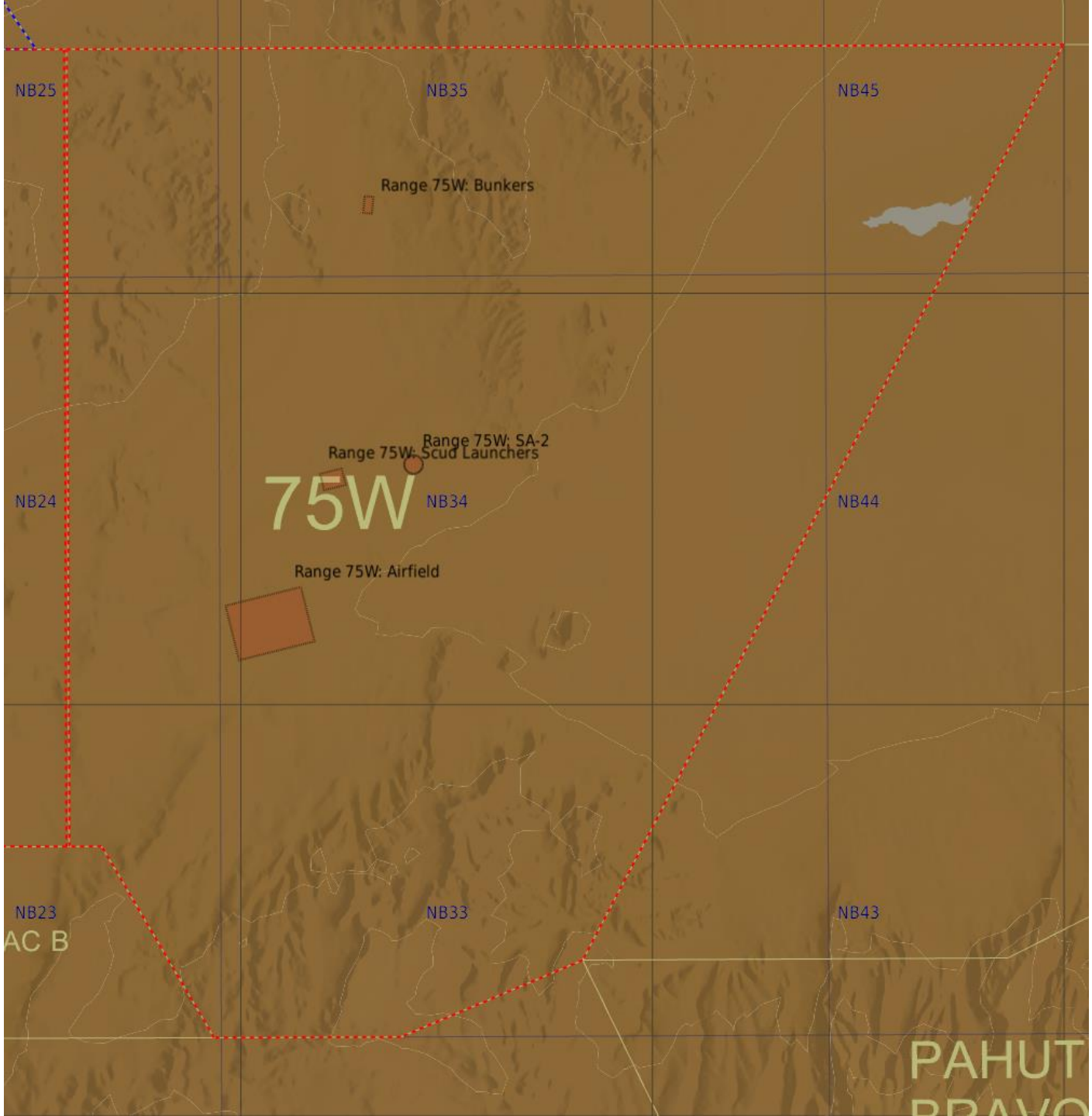
KC135MPRS; 51X; 251Mhz

28000ft @ 0.68 Mach

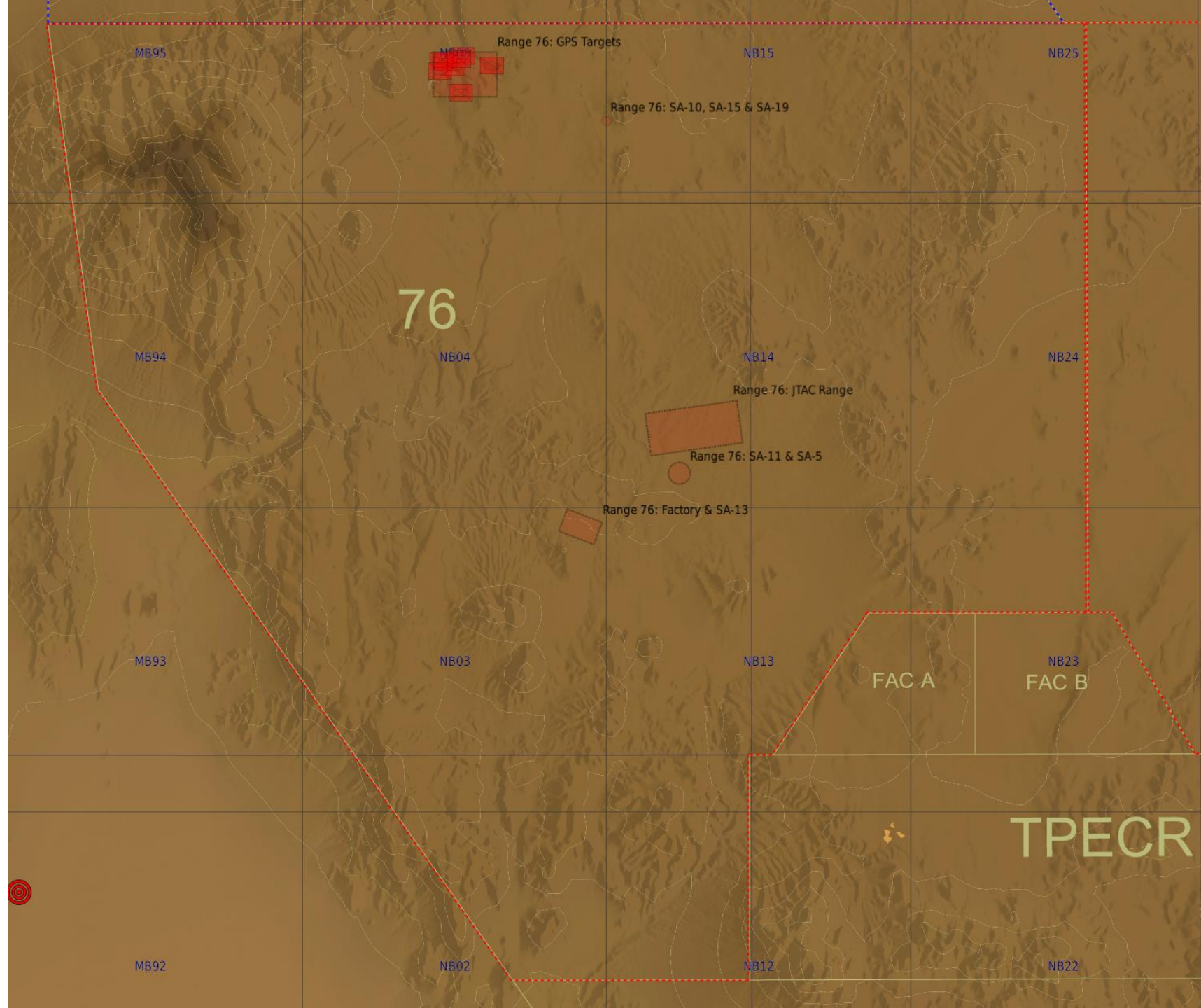












Reveille North Air to Training Area

REVEILLE  
NORTH

REVEILLE SOUTH

EC EAST

